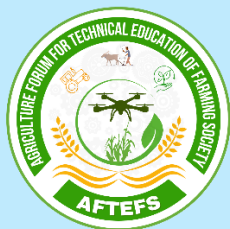


AGRICULTURE FORUM FOR TECHNICAL EDUCATION OF FARMING SOCIETY

Kota, Rajasthan



AI and Smart Sensors in Crop Management

Authors

Dr. Sasi Chandra Gummadri¹, Dr. C. S. Shinde²,
Dr. G. R. Andhale³, Arkit Saha⁴, Ritwik Sahoo⁵

¹Assistant Professor, Department of Agronomy, Bharatiya Engineering Science and Technology Innovation University.

²Assistant Professor, Department of Genetics and Plant Breeding, SBT College of Agriculture Sangamner.

³Ph.D Scholar, Department of Genetics and Plant Breeding, Mahatma Phule Krishi Vidyapeeth Rahuri.

⁴M.Sc Scholar, Department of Agricultural Economics, Punjab Agricultural University.

⁵DST INSPIRE FELLOW (SRF), Department of Plant Pathology, Uttar Banga Krishi Viswavidyalaya.

INTRODUCTION

Agriculture is undergoing a major technological transformation driven by the integration of Artificial Intelligence (AI), smart sensors, Internet of Things (IoT), robotics, remote sensing and big data analytics. Modern crop management systems increasingly rely on intelligent technologies to optimize agricultural production, improve resource-use efficiency, and ensure environmental sustainability. Traditional farming methods often depend on manual observations, generalized recommendations, and reactive management practices. However, climate change, water scarcity, labor shortages, soil degradation and increasing food demand have created an urgent need for precision agriculture technologies. AI-powered systems combined with smart sensors provide real-time monitoring and data-driven decision-making capabilities that significantly improve crop productivity and profitability.

Understanding Artificial Intelligence in Agriculture

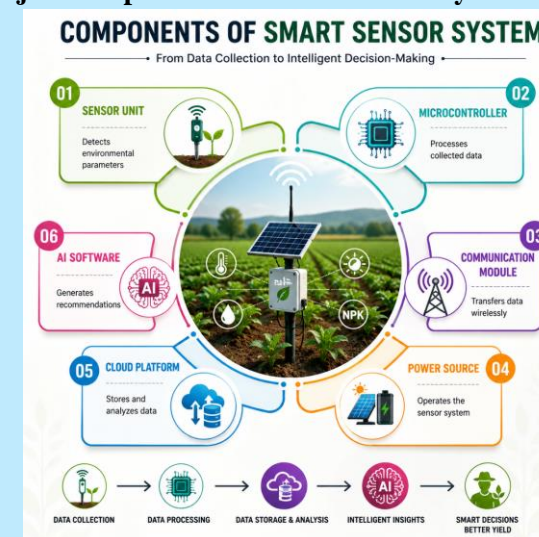
What is Artificial Intelligence

Artificial Intelligence (AI) involves computer systems that mimic human intelligence for learning, analysis, and decision-making. In agriculture, AI analyzes large agricultural datasets to provide predictive recommendations and improve crop management. Technologies such as Machine Learning, Deep Learning, Computer Vision, Robotics, Predictive Analytics and Natural Language Processing help automate farming operations, enhance precision agriculture and improve overall farm efficiency.

What are Smart Sensors?

Smart sensors are advanced electronic devices capable of detecting environmental, biological, and physical changes in agricultural fields. These sensors collect real-time data and transmit it to cloud-based systems or AI platforms for analysis. Smart sensors play a crucial role in precision agriculture because they provide continuous monitoring of crop and soil conditions.

Major Components of Smart Sensor Systems



Types of Smart Sensors Used in Crop Management

Smart sensors play a vital role in modern crop management by continuously monitoring soil, plant, and environmental conditions. Soil moisture sensors measure soil water content to optimize irrigation scheduling, conserve water and improve crop growth, especially in drip irrigation and greenhouse systems. Nutrient sensors monitor essential nutrients

like nitrogen, phosphorus and potassium, enabling precise fertilizer application and reducing environmental pollution. Temperature sensors help predict crop stress, manage greenhouse environments, improve seed germination and support frost protection. Humidity sensors are useful for disease forecasting, greenhouse management and monitoring field microclimates. pH sensors assess soil acidity or alkalinity to improve nutrient availability and soil management practices. Optical sensors analyze crop health through reflected light to detect nutrient deficiencies, monitor crop vigor, estimate chlorophyll content and assess biomass production. Gas sensors monitor gases such as carbon dioxide, methane and ammonia for greenhouse monitoring, controlled environment agriculture and post-harvest storage management.

Role of AI in Crop Management

1. Precision Irrigation Management

AI-based irrigation systems use data from soil moisture sensors, weather stations and satellite imagery to optimize irrigation scheduling and improve water management. These intelligent systems help conserve water, reduce electricity consumption, lower irrigation costs and promote better crop growth by supplying water according to crop requirements. By improving irrigation efficiency and minimizing water wastage, AI-powered irrigation technologies can reduce agricultural water consumption by nearly 30-50%, making farming more sustainable and resource-efficient.

2. Disease Detection and Diagnosis

AI-powered image recognition systems help identify crop diseases at early stages by analyzing plant

images using advanced technologies such as computer vision, drone imaging, deep learning algorithms and smartphone-based diagnostic tools. These technologies enable rapid and accurate disease detection, allowing farmers to take timely corrective measures. Early diagnosis helps reduce unnecessary pesticide use, improves disease management efficiency and enhances overall crop protection and productivity.

3. Pest Monitoring and Prediction

Smart traps integrated with AI systems are used to monitor insect populations and predict potential pest outbreaks in agricultural fields. These technologies analyze pest activity in real time, enabling farmers to implement timely and targeted pest control measures. As a result, they help reduce excessive chemical pesticide applications, improve pest management efficiency and promote environmentally sustainable agricultural practices.

4. Yield Prediction

AI models analyze weather conditions, soil properties, crop growth patterns, and historical agricultural records to accurately estimate crop yields. These predictive systems help farmers and agricultural agencies make informed decisions related to market planning, supply chain management and farm income forecasting. Accurate yield prediction also supports better resource allocation, reduces market uncertainty and improves overall agricultural productivity and profitability.

5. Weed Detection and Smart Spraying

AI-powered robotic systems use advanced sensors, computer vision, and machine learning technologies to identify weeds and apply herbicides with high precision. These smart systems target only unwanted

plants, significantly reducing herbicide consumption and lowering production costs. Precise chemical application also minimizes environmental contamination, supports sustainable weed management and improves overall farming efficiency.

6. Nutrient Management

AI algorithms analyze sensor data, soil conditions, and crop nutrient requirements to recommend precise fertilizer doses for specific fields and growth stages. This precision nutrient management improves fertilizer-use efficiency, enhances soil fertility and reduces nutrient losses and environmental pollution. As a result, AI-based fertilization systems promote sustainable nutrient management and support higher crop productivity.

Internet of Things (IoT) in Smart Agriculture

The Internet of Things connects sensors, drones, farm equipment and cloud-based systems through wireless communication networks.

Key Functions of IoT in Agriculture



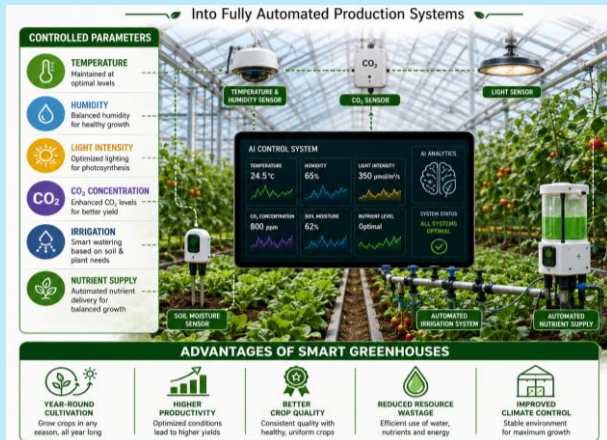
AI-Powered Drones in Crop Management

Agricultural drones equipped with multispectral cameras and AI-based software are becoming important tools in precision farming. These drones are used for crop health monitoring, pesticide spraying, fertilizer application, weed mapping, plant population assessment and water stress detection. Drone technology enables rapid field coverage, reduces labor requirements, improves spraying efficiency and supports precision agriculture practices.

Machine Learning in Precision Agriculture

Machine Learning enables computers to learn from agricultural data and improve the accuracy of farm decision-making. In agriculture, machine learning is widely used for crop disease prediction by identifying disease symptoms before visible damage appears. It also supports weather forecasting by predicting rainfall patterns, temperature fluctuations and drought risks. AI-based systems optimize fertilizer schedules according to crop growth stages, improving nutrient management and efficiency.

Smart Greenhouse Technology



Remote Sensing and Satellite Technologies

Remote sensing technologies enable large-scale crop monitoring by collecting detailed agricultural data through advanced imaging systems such as satellite imagery, thermal imaging, multispectral imaging and hyperspectral imaging. These technologies help detect crop stress, monitor drought conditions, assess nutrient deficiencies, estimate crop yields and support precision farming practices. Remote sensing improves decision-making by providing accurate, real-time information for efficient and sustainable crop management.

AI and Smart Agriculture in India

India is rapidly advancing toward digital agriculture through various government initiatives and private-sector innovations. Programs such as the Digital Agriculture Mission promote the use of AI, big data, drones and smart farming technologies, while AgriStack develops digital farmer databases to support precision agriculture services. Government drone promotion schemes encourage the adoption of agricultural drones through subsidies and training programs and smart irrigation initiatives focus on improving water-use efficiency through advanced irrigation technologies.

Future Prospects of AI in Agriculture

The future of crop management will increasingly rely on intelligent automation and precision agriculture technologies. Emerging innovations such as autonomous agricultural robots, AI-powered smart tractors, blockchain-based farm traceability systems and real-time disease forecasting are transforming modern farming practices. Advanced technologies including digital twins for farming systems, AI-driven precision breeding, robotics for harvesting

and pruning, edge computing, climate-smart agriculture, and smart vertical farming systems are expected to improve productivity, sustainability, resource-use efficiency and climate resilience in agriculture.

CONCLUSION

Artificial Intelligence and smart sensor technologies are transforming crop management from traditional practices to highly precise, data-driven systems. These innovations enable farmers to monitor crops continuously, optimize resource utilization, improve productivity and enhance sustainability. AI-powered precision farming technologies can address major agricultural challenges such as climate variability, water scarcity, nutrient inefficiency, pest outbreaks and labor shortages. Smart sensors provide real-time information that supports accurate agricultural decision-making, while AI systems analyze complex datasets to generate predictive recommendations. Although challenges such as high costs, technical limitations and digital infrastructure gaps remain, continued advancements in AI, IoT, robotics and remote sensing are expected to accelerate the adoption of smart agriculture worldwide.